

 **LINDY**®

COMPUTER CONNECTION TECHNOLOGY

**USB 2.0 Docking
Station Pro**

User Manual

English



LINDY No. 42985

www.lindy.com



Introduction

Thank you for purchasing the LINDY USB 2.0 Notebook Docking Station Pro. This Docking Station is a versatile expansion unit which allows you to conveniently connect your Notebook computer to all manner of desktop peripherals.

Features

- 2 Port, High-Speed USB 2.0 Hub, backwards compatible with USB 1.1
- USB 2.0/1.1 High-Speed Link Port
- PC-Linq software for data transfer
- Serial RS-232 Port
- Bi-directional Parallel Printer Port
- PS/2 Keyboard & Mouse Ports
- 10/100 Fast Ethernet LAN Port

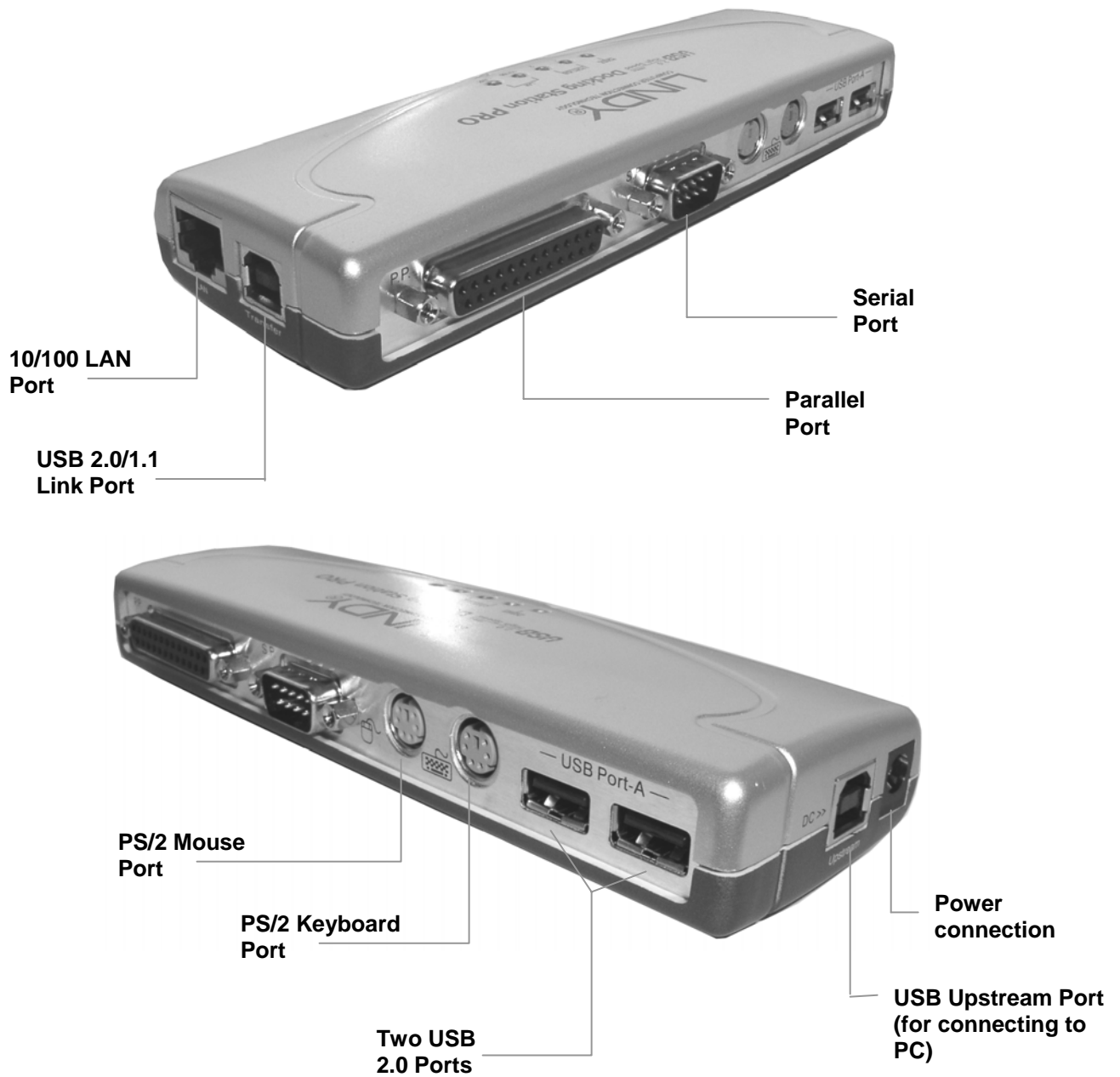
System Requirements

- Pentium compatible PC or Notebook
- CD drive
- USB 2.0/1.1 Port
- Windows 98SE/Me/2000/XP

Package Contents

- USB 2.0 Docking Station Pro
- USB connection cable
- Driver CD
- External Power Adapter
- This manual

Connections



1. Plug the power adapter jack into the power socket on the Docking Station
2. Locate an unused mains outlet and plug in the power adapter
3. Ensure your computer is powered up and has launched Windows
4. Plug the flat end (Type A) of the supplied USB cable into a free USB port on your PC
5. Plug the square end (Type B) of the USB cable into the port marked **Upstream** on the Docking Station
6. At this point Windows will detect the Docking Station and begin the installation process (see next section)

Software Installation

The driver installation process is only required when you connect the docking station for the very first time. Please make sure that your computer is powered on and connected to the Docking Station's **Upstream** port.

Please note the examples illustrated are for Windows ME and XP. For Windows 98SE and 2000, the installation procedures are similar.

Important: Please make sure the supplied driver CD-ROM is placed in the CD drive before continuing.

Windows ME – Installation Procedure

1. After connecting the Docking Station to the computer the following window will appear:



Select **Automatic search for a better driver** and click **Next** to continue.

2. The following window will appear. Select **CD-ROM drive** and click **Next**:

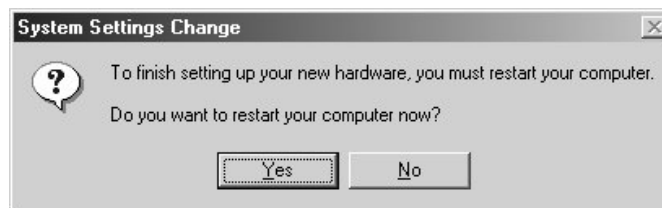


- Windows will search the CD for each relevant driver (in this case the USB 2.0 Fast Ethernet Adapter). Once the driver has been found and automatically installed the following window will appear:

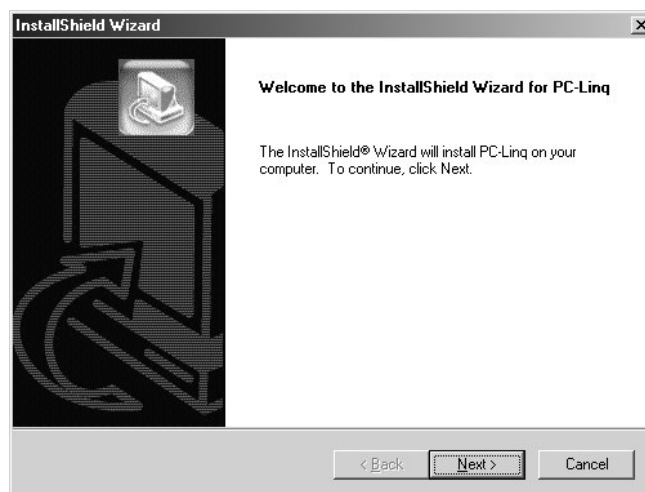


Click **Finish** to proceed.

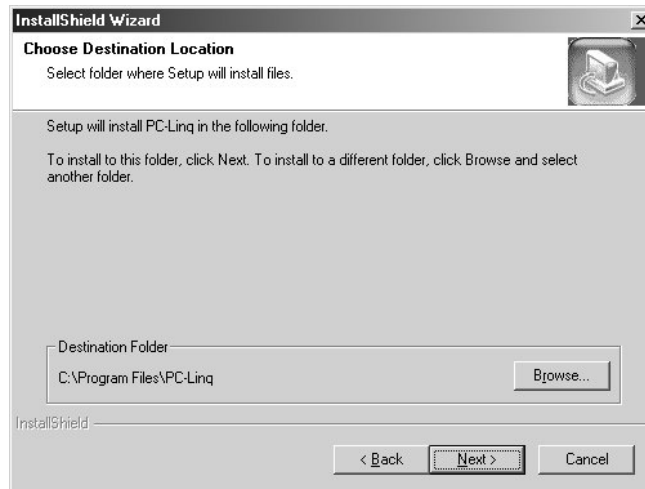
- If, at this point, Windows asks you to restart your computer click **No**:



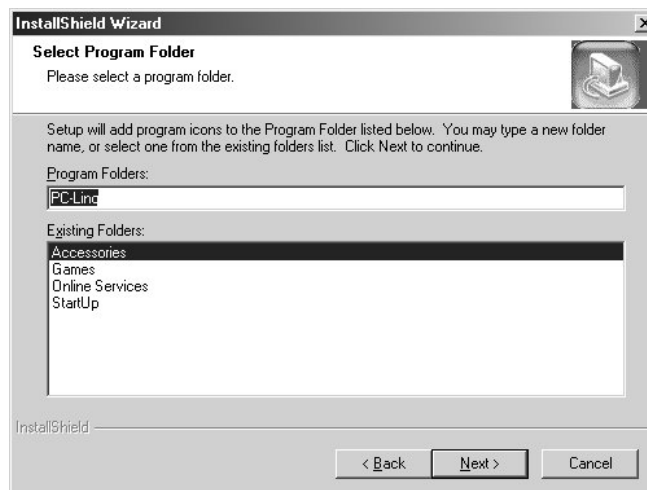
- Now, repeat steps 1 to 4 for each element that requires driver installation. Windows will continue to prompt for user intervention as detailed above until all the relevant drivers have been installed - simply follow the on-screen instructions!
- When Windows detects and begins to install the drivers for the **USB Bridge Cable** the **PC Linq** software installation screen will also appear. Click **Next**:



7. The **Choose Destination Location** window will appear. Click **Next** to continue or **Browse** to select a different location:



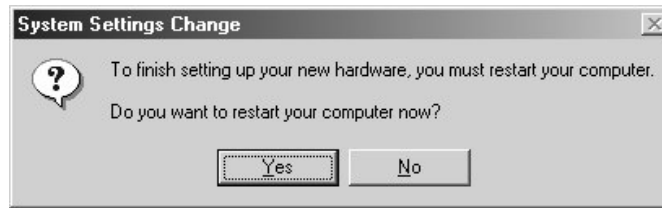
8. Select the folder where you want the **PC-Linq** icon to be listed and click **Next**:



9. The **PC-Linq** icon will be added to the desktop:



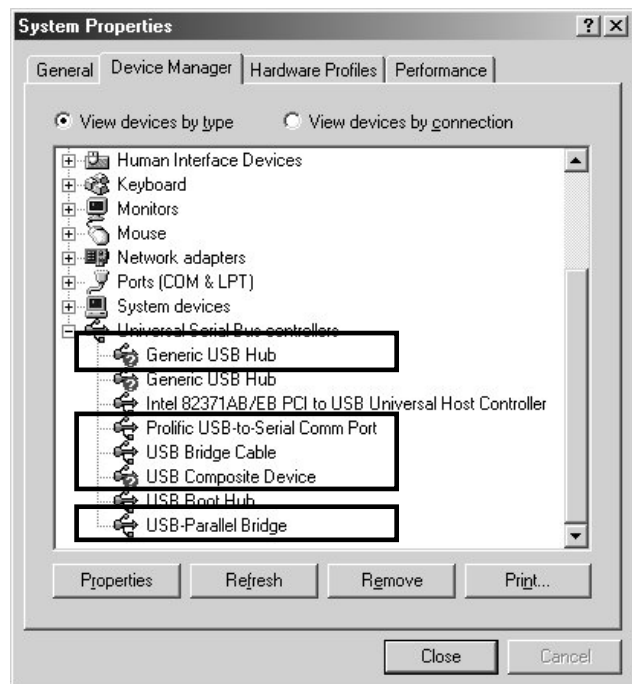
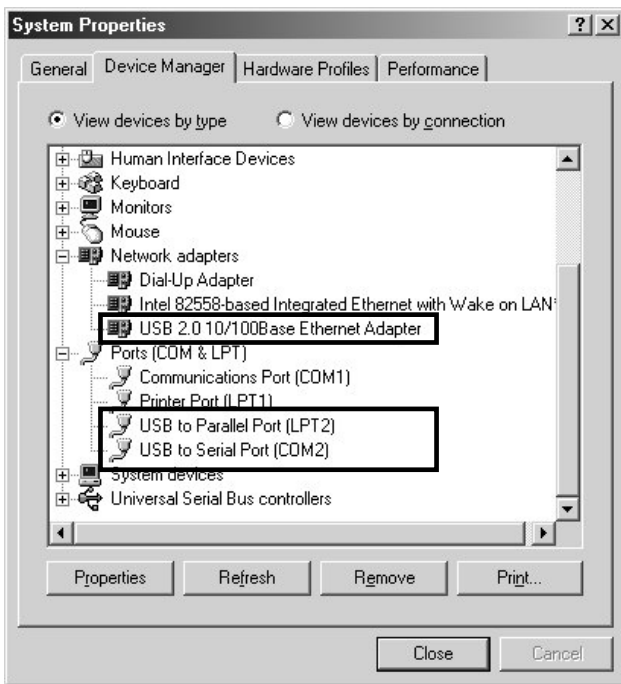
10. After Windows has finished installing all the software you may be asked to restart your computer. Click **Yes**:



Windows ME – Verifying Installation

To verify the correct installation of the drivers you need to view **Device Manager**.

Right click the **My Computer** icon on your Windows desktop and select **Properties** from the drop-down list. Select the **Device Manager** tab and double click the sections marked **Universal Serial Bus Controllers**, **Ports (COM & LPT)** and **Network Adapters**. The entries outlined below should be present:



Windows XP – Installation Procedure

1. After connecting the Docking Station to the computer the following window will appear:



Select **Install the software automatically** and click **Next** to continue.

2. If at anytime during the installation, you see a Windows Logo testing screen, click **Continue Anyway**:

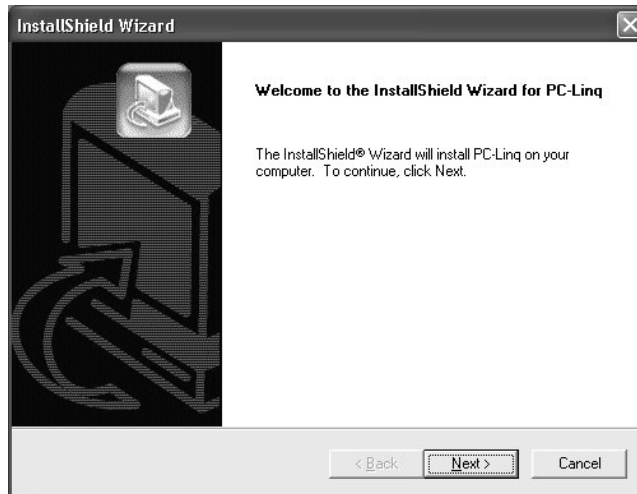


3. Windows will search the CD for each relevant driver (in this case the Generic USB Hub). Once the driver has been found and automatically installed the following window will appear:

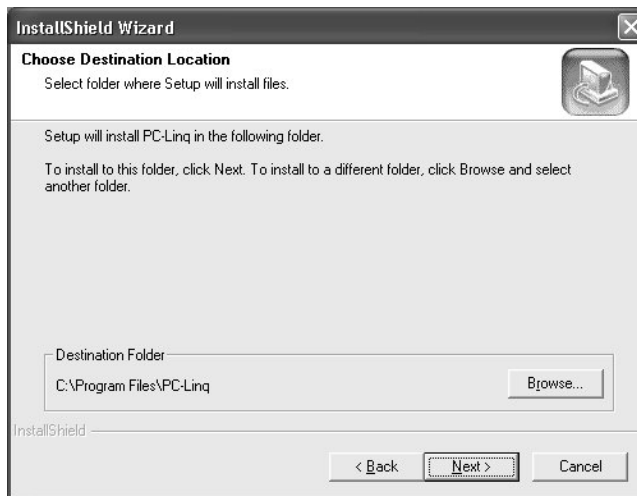


Click **Finish** to continue.

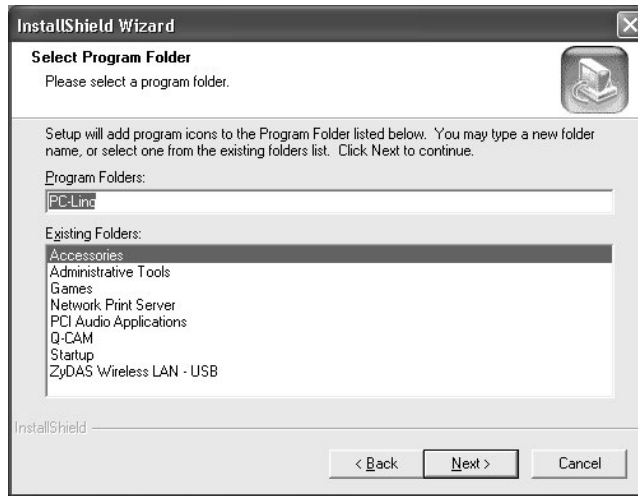
- Now, repeat steps 1 to 3 for each element that requires driver installation. Windows will continue to prompt for user intervention as detailed above until all the relevant drivers have been installed - simply follow the on-screen instructions!
- When Windows detects and begins to install the drivers for the **USB Bridge Cable** the **PC Linq** software installation screen will also appear. Click **Next**:



- The **Choose Destination Location** window will appear. Click **Next** to continue or **Browse** to select a different location:



7. Select the folder where you want the **PC-Linq** icon to be listed and click **Next**:



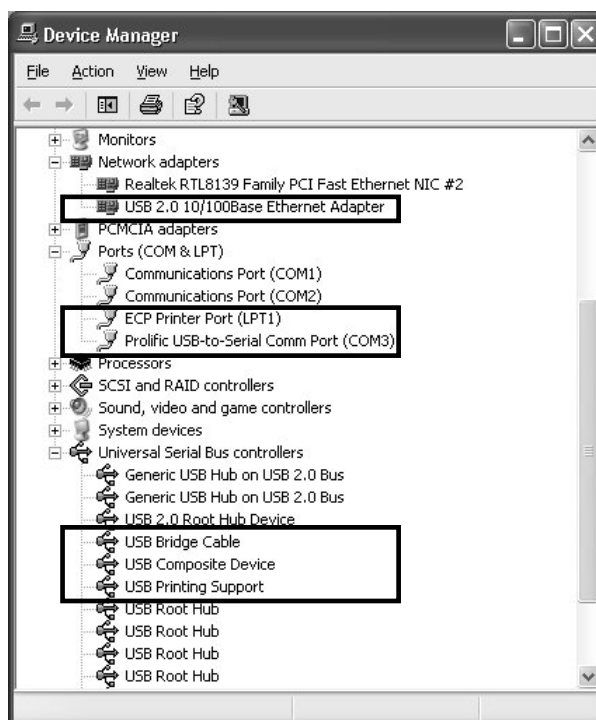
8. The **PC-Linq** icon will be added to the desktop:



Windows XP – Verifying Installation

To verify the correct installation of the drivers you need to view **Device Manager**.

Right click the **My Computer** icon on your Windows desktop and select **Properties** from the drop-down list. Select the **Hardware** tab, then and click on the **Device Manager** button. Double click the sections marked **Network Adapters**, **Ports (COM & LPT)** and **Universal Serial Bus controllers**. The entries outlined below should be present:



Using the Serial and Parallel Ports

Serial Port:

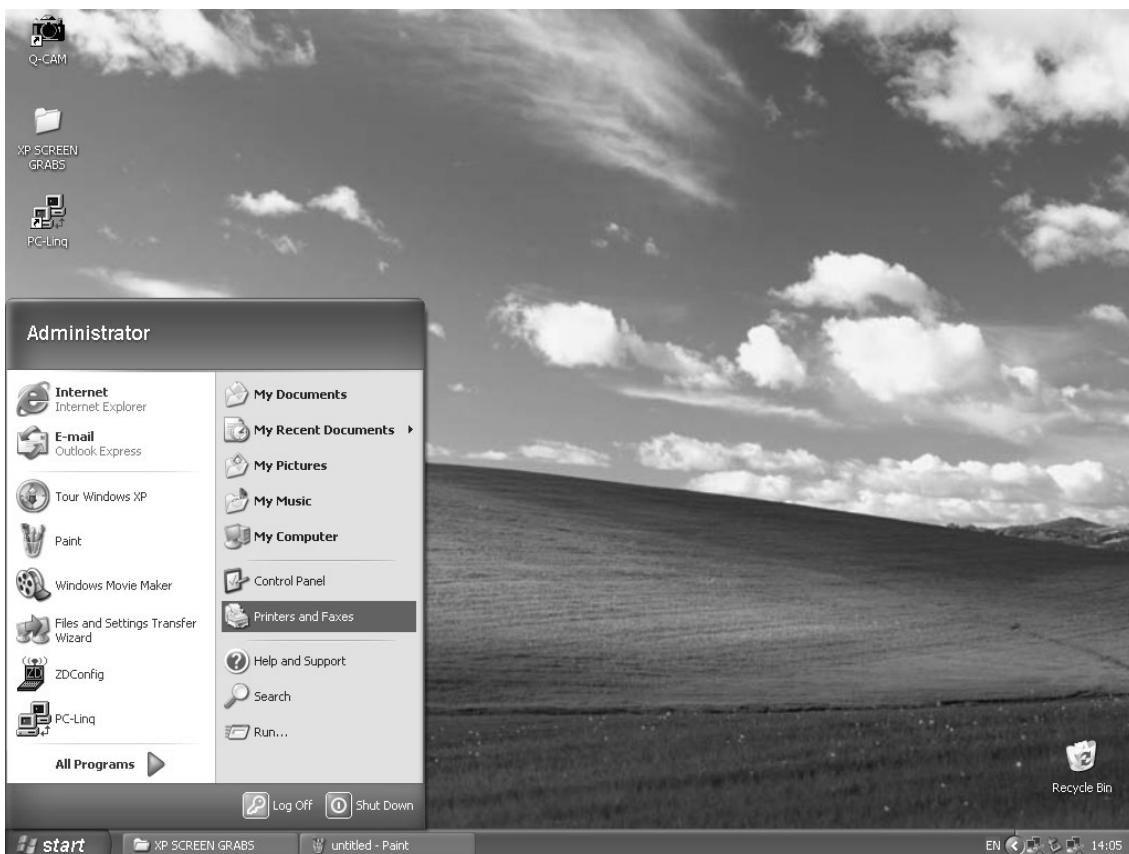
If you connect a serial device (e.g. modem) to the docking station you must perform the **Add New Hardware** function from the Windows Control Panel and manually install the device.

The USB to Serial interface used by the docking station is designed to work with modems or serial devices capable of handling 'virtual ports'. Most serial mice and other older serial devices recognize physical serial ports only and therefore will not work with the USB to Serial interface.

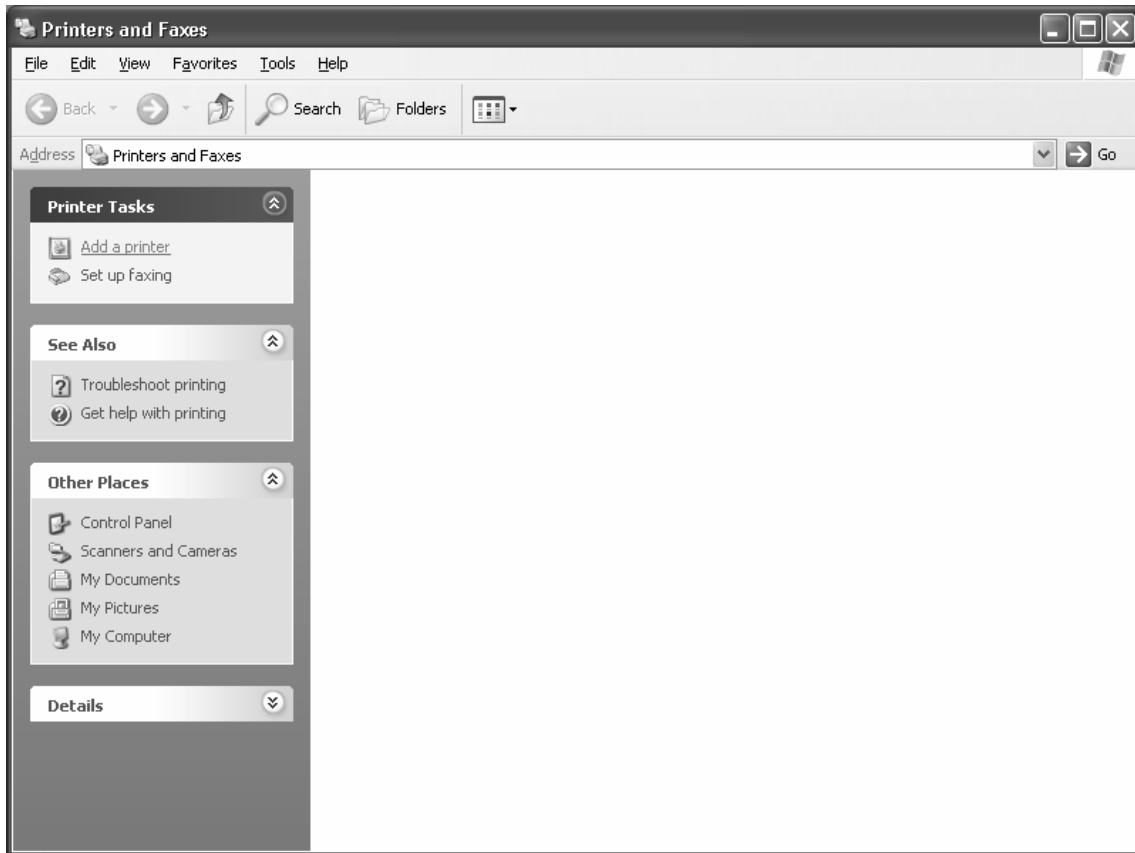
Parallel Port:

If you connect a printer to the parallel port on the Docking Station and your printer is not automatically detected, you may need to manually install the printer driver and set up the printer port. Please follow the example below. The example shown is for Windows XP, the procedure is similar for Windows 98SE, ME and 2000. If you experience problems when installing the printer driver, please use the Windows Help program.

1. Click on the **Start** button on the taskbar, then select **Printers and Faxes** from the Start Menu:



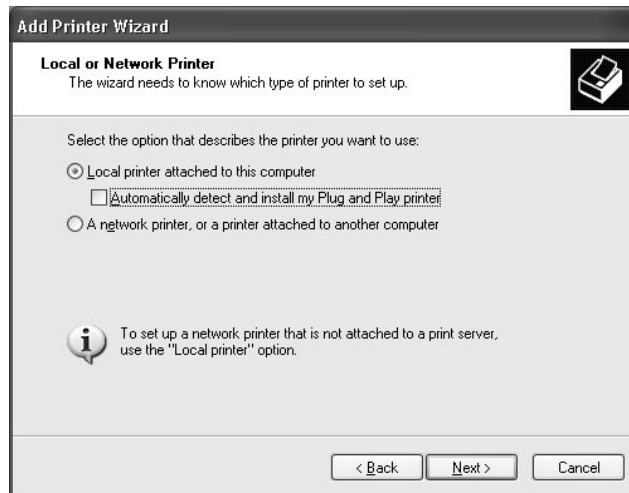
2. In the **Printer Tasks** box, click on **Add a printer**:



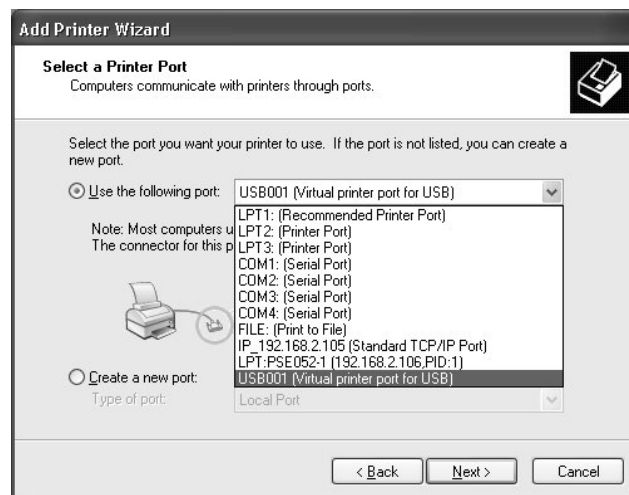
3. The **Add Printer Wizard** window will appear. Click **Next**:



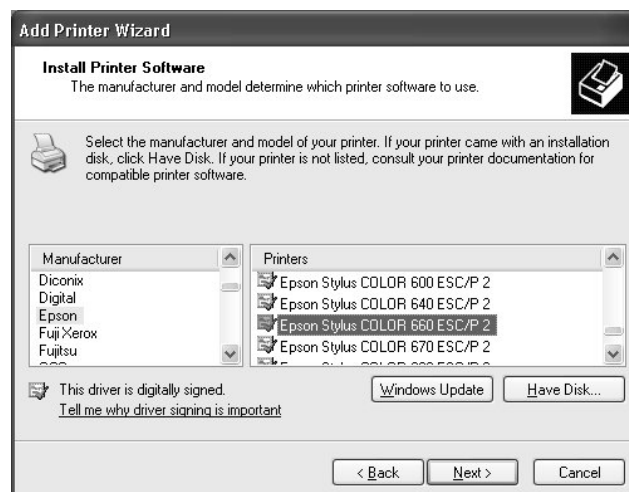
4. The **Local or Network printer** window appears. Select **Local printer attached to this computer**:



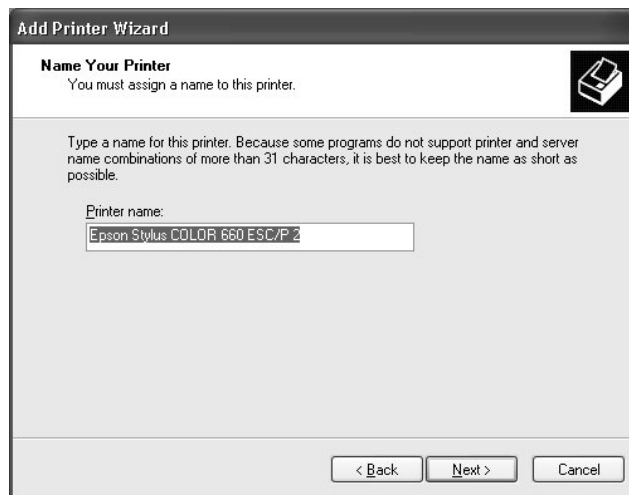
5. Now you need to select the Docking Station's printer port. Click the option button next to **Use the following port** and scroll down to highlight **USB001 (Virtual printer port for USB)**. Click **Next**:



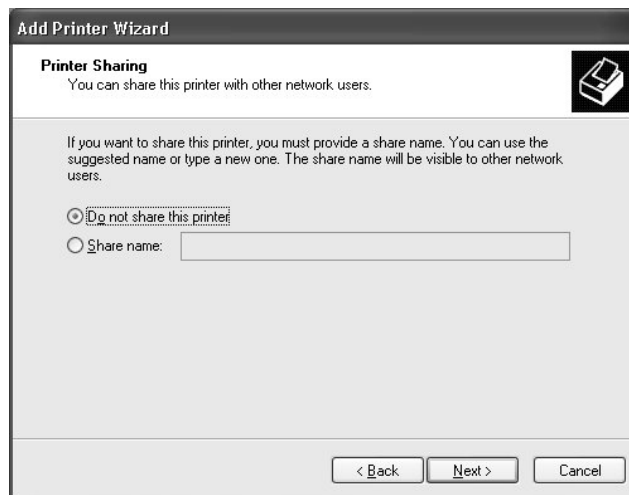
6. At the next window select your printer from the list and click **Next**. If you have the driver disk for the printer select **Have disk...**



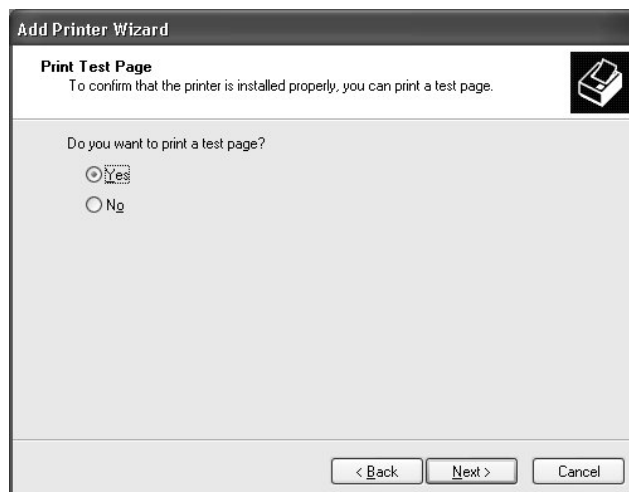
7. You can assign your printer a name here. Click **Next**:



8. Select **Do not share this printer** and click **Next**:



9. If you want to print a test page, select **Yes**. Click **Next**:



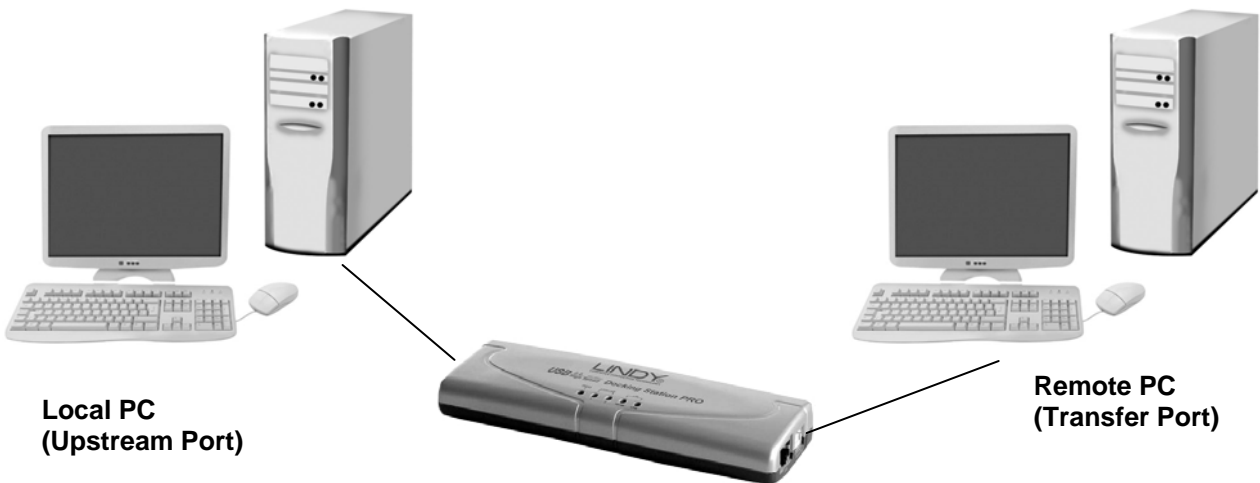
10. To complete the printer installation click **Finish**.



PC to PC data link

Using the docking station's **Transfer** port and the supplied PC Linq software you can connect two PCs together for data transfer.

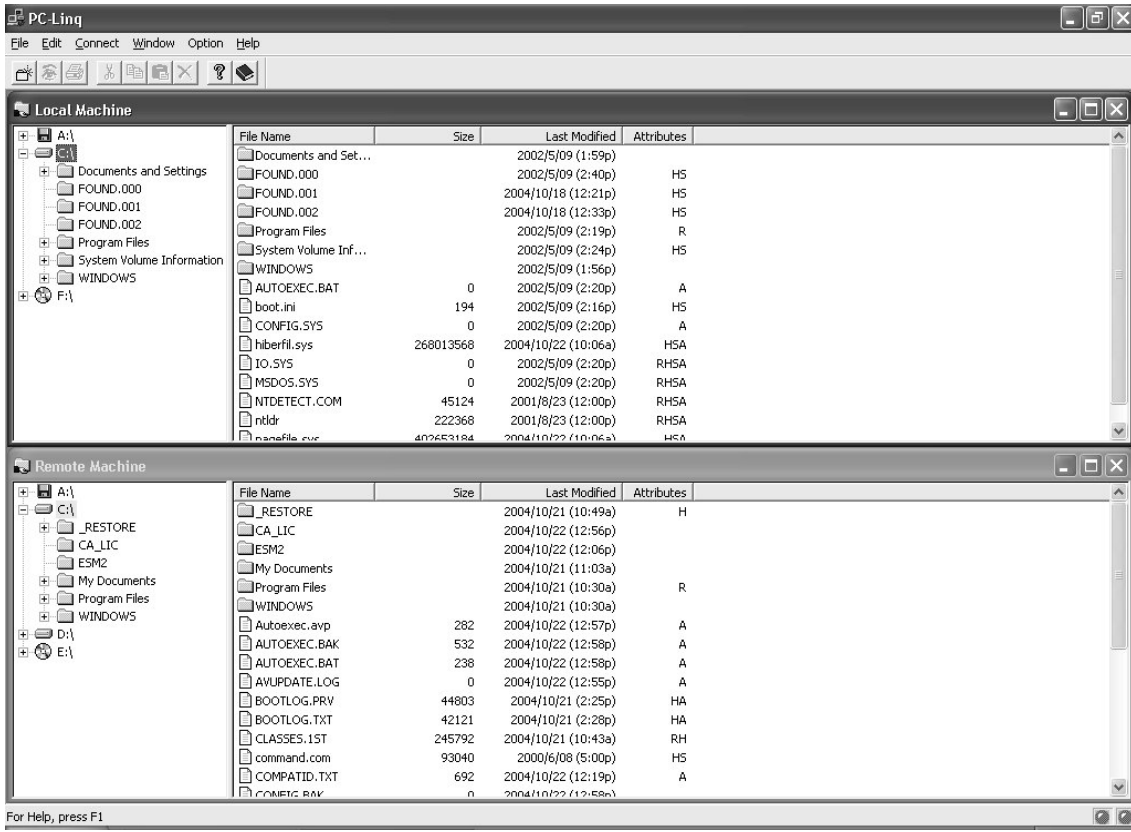
To set up the PC data link function (**PC Linq**), you need two PC's, each with a USB port, and an additional USB Type A to B cable (sold separately). One PC is connected to the docking station's **Upstream (Local)** port; the other to the Docking Station's **Transfer (Remote)** port.



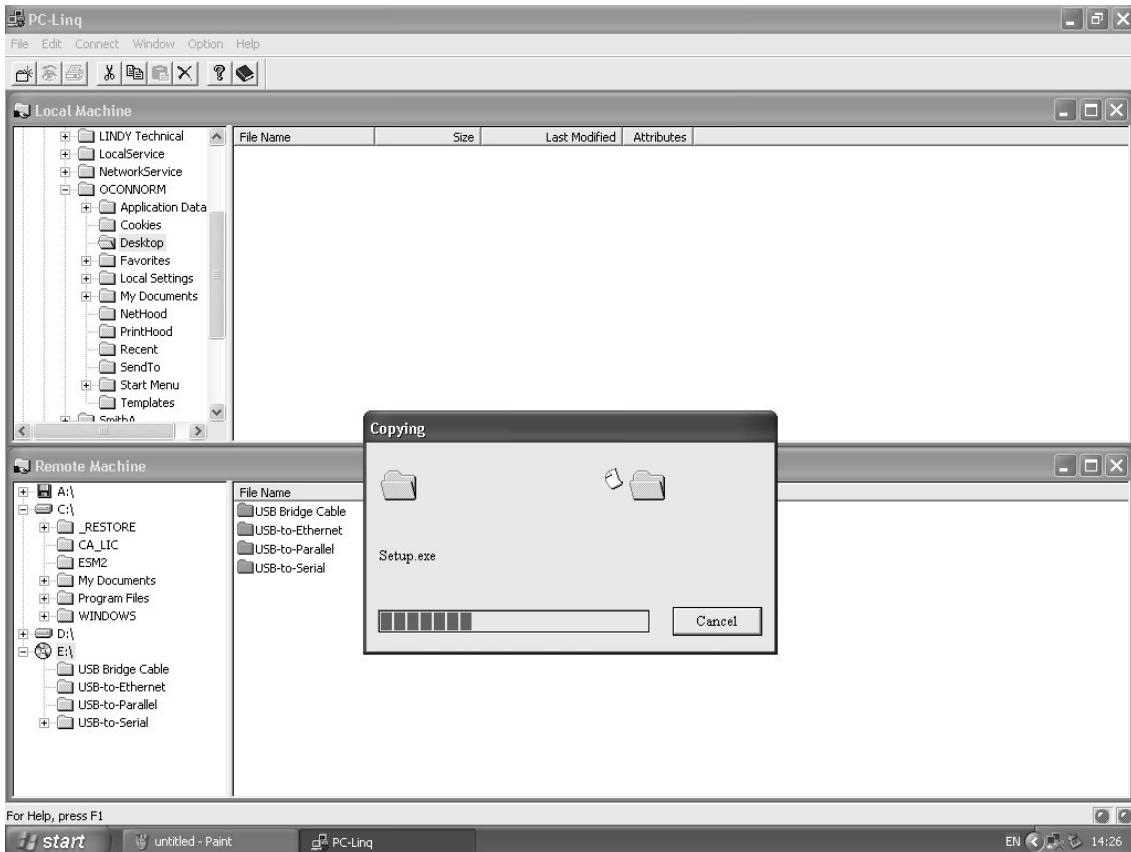
1. Firstly, ensure the PC Linq software is installed on both connected PC's. The software can be found on the supplied driver CD in the folder called **USB Bridge Cable**.
2. Connect the local and remote computers according to the instructions and diagram above.
3. Launch the PC Linq application on both computers by clicking the icon on each Windows desktop –



4. PC Linq will display two Explorer type windows – one for each connected PC:



5. To copy files between PC's, simply 'drag & drop' between the local and remote windows:



LINDY No. 42985

FCC

This device complies with part 15 of the FCC Rules.
Operation is subject to the following two conditions:

1. This device may not cause harmful interference, and
2. This device must accept any interference received, including interference that may cause undesired operation

CE

This equipment is in compliance with the requirements of the following regulations:
EN 55 022: CLASS B



www.lindy.com